

POTTERS BAR  
149 High Street, Potters Bar EN6 5BB  
Tel: 01707 657181  
Email: pottersbar@andrewward.co.uk

BROOKMANS PARK  
35 Bradmore Green, Brookmans Park AL9 7QR  
Tel: 01707 649779  
Email: brookmanspark@andrewward.co.uk

BARNET  
175 High Street, Barnet EN5 5SU  
Tel: 020 8441 6000  
Email: barnet@andrewward.co.uk

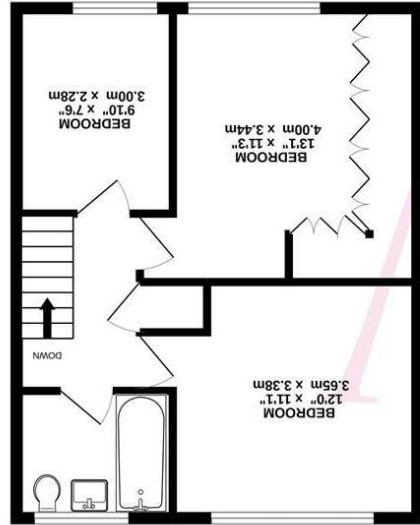
Disclaimer: "These property particulars, including floor plans, are set out as a general outline only for guidance and DO NOT constitute any part of an offer or contract. Any purchaser or other must satisfy themselves by inspection or otherwise as to their accuracy. All measurements are given as approximate, no survey or testing of appliances has been carried out. No employee of Andrew Ward Estate Agents has the authority to make or give any representation or warranty in respect of the property."

www.andrewward.co.uk

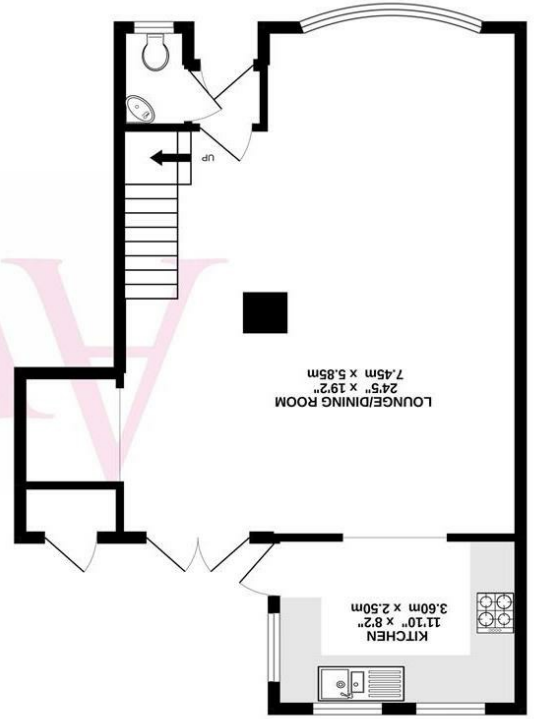
35 Bradmore Green, Brookmans Park, Herts, AL9 7QR  
01707 649779 | brookmanspark@andrewward.co.uk

## Contact us

## Our Offices



1ST FLOOR  
469 sq. ft. (43.6 sq.m.) approx.



GROUND FLOOR  
598 sq. ft. (55.5 sq.m.) approx.

Whilst every attempt has been made to ensure the accuracy of the floorplan contained herein, measurements of doors, windows, rooms and any other items are approximate and no responsibility is taken for any error, omission or misstatement. This plan is for illustrative purposes only and should be used as such by any prospective purchaser. The services, systems and appliances shown have not been tested and no guarantee as to their operability or efficiency can be given.  
Made with Metropix 6/2022

8 GREVILLE CLOSE, WELHAM GREEN AL9 7ED

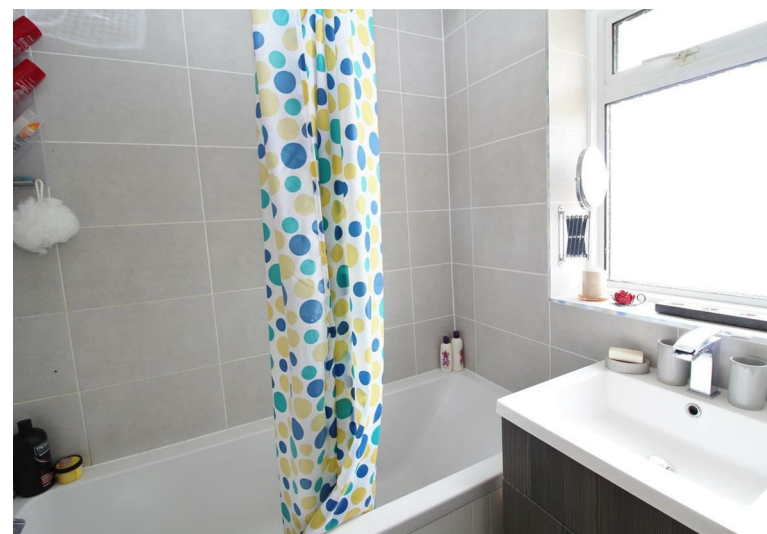
Guide Price £465,000 | Freehold





## Property Overview

A three bedroom end of terrace house offering good size accommodation along with landscaped south westerly facing garden. Comprising entrance hall with cloakroom, spacious open plan living space with lounge and dinning area's leading through to a well fitted kitchen and door to garden. To the first floor are three good size bedrooms with plenty of built in storage space served by a modern family bathroom. The rear garden enjoys a southerly aspect and has been landscaped with patio area, lawn and seating area to rear.



## Property Features

- Open Plan Living Space: 24'9 x 23'2
- Kitchen: 11'9 x 8'1
- Cloakroom
- Bathroom: 6'9 x 5'5
- Sole Agent
- Bedroom One: 13'11 x 11'3
- Bedroom Two: 11'11 x 11'0
- Bedroom Three: 9'11 x 7'5
- Outdoor Storage
- South Facing Garden

## Agents Notes

The property offers spacious open plan living space with scope to reconfigure into individual rooms if desired along with gas radiator central heating, double glazing and available to view immediately.